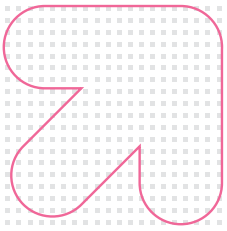
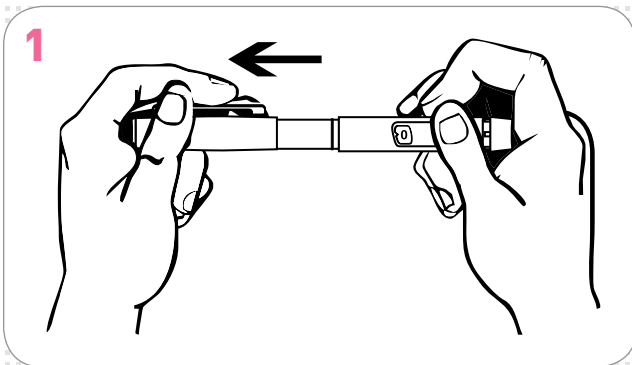


Axis-R

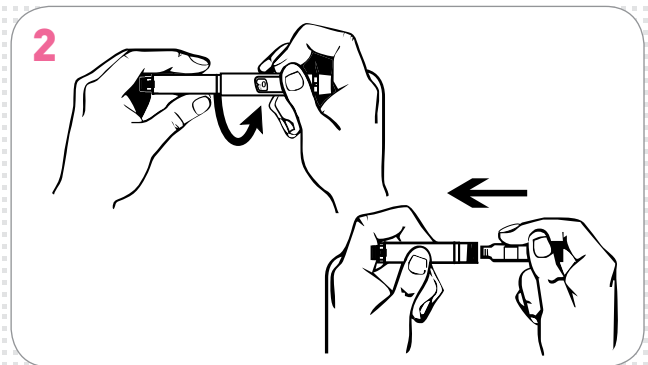
PEN SYSTEM



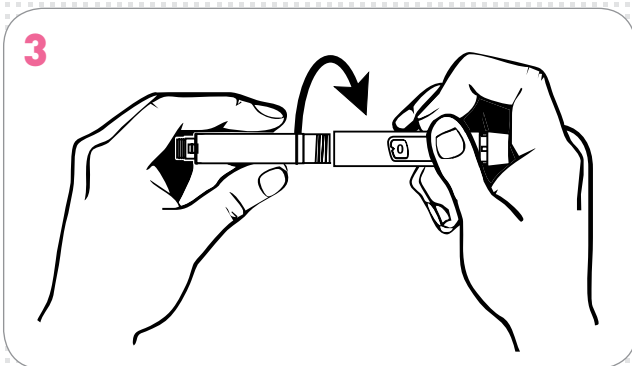
QUICK GUIDE FOR THE USE OF AXIS-R



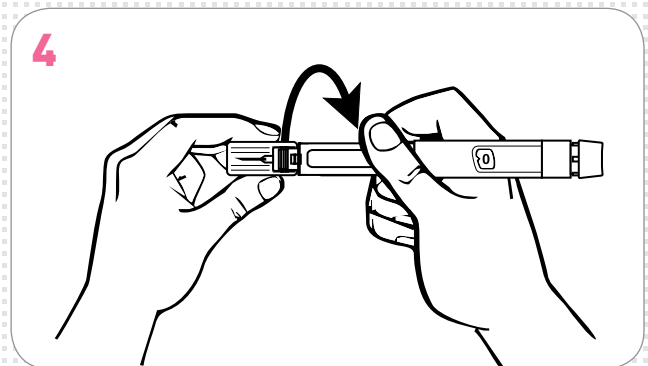
1 Remove the cap from the pen.



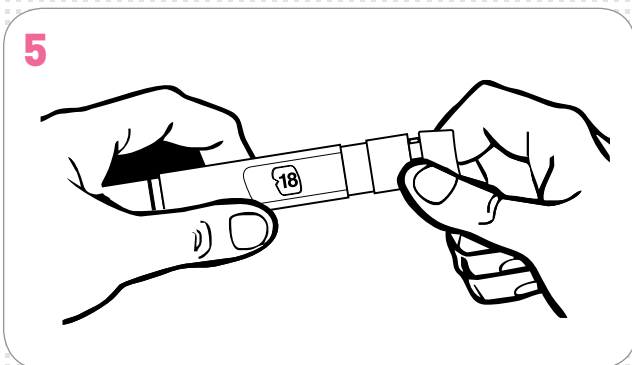
2 Unscrew the cartridge holder and insert the cartridge into the cartridge holder



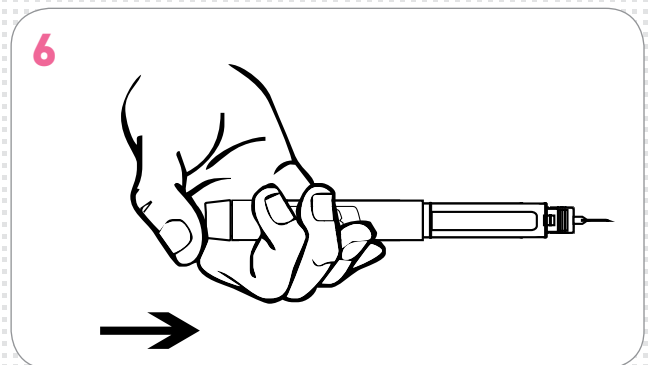
3 Attach the cartridge holder to the pen.



4 Attach the needle to the pen.



5 Dial dose.



6 Insert needle into the skin and press down on button to inject.

FOR MORE INFORMATION PLEASE CONTACT US OR VISIT US AT WWW.HASELMEIER.COM