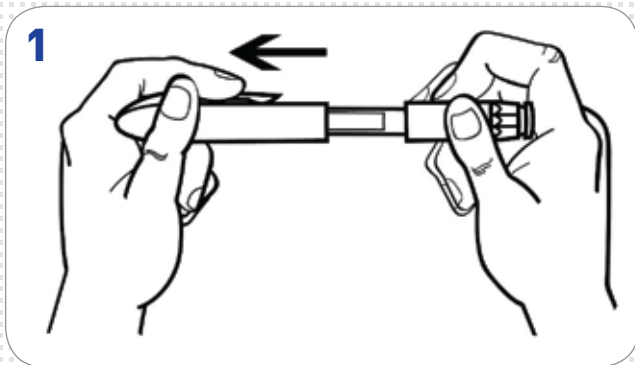
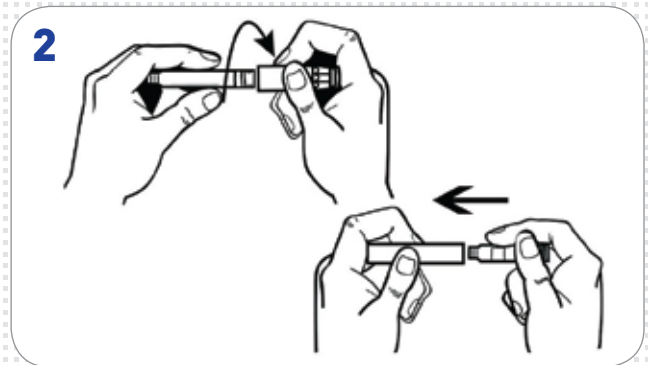


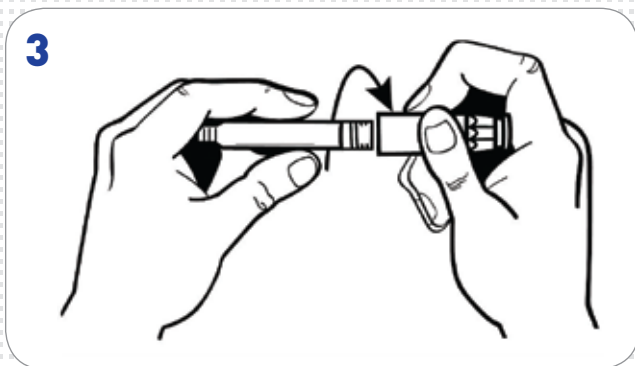
QUICK GUIDE FOR THE USE OF i-PEN



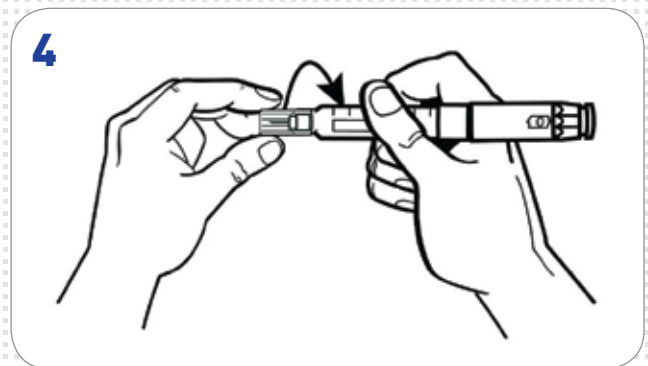
1 Unscrew the cap from the pen.



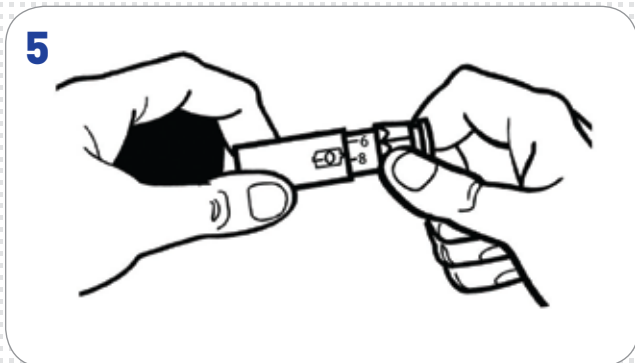
2 Unscrew the cartridge holder and insert the cartridge.



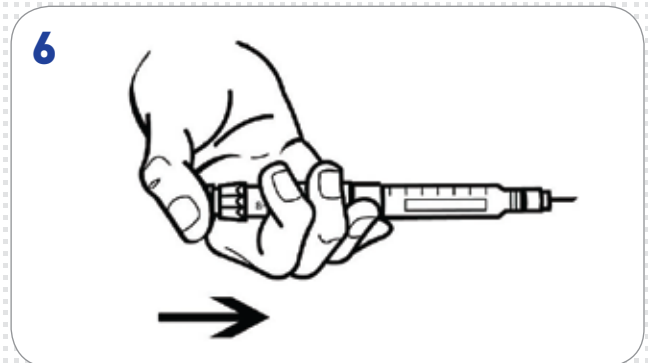
3 Attach the cartridge holder.



4 Remove the paper tab and attach the needle to the pen.



5 Dial the dose.



6 Insert the needle into the skin and press down on button to inject.